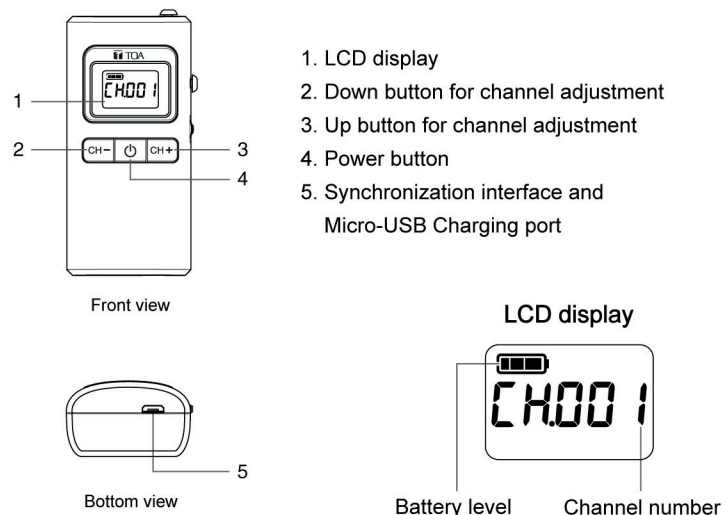
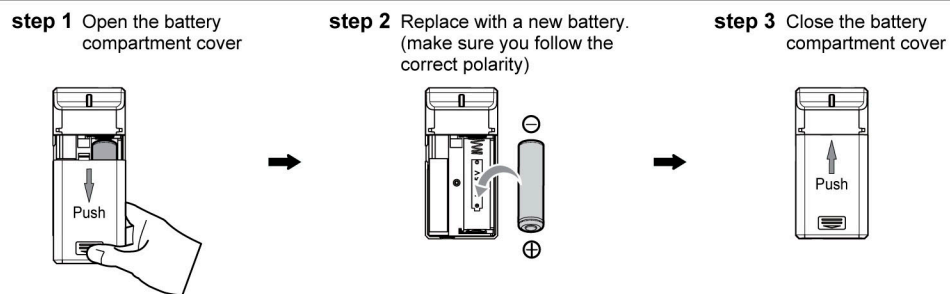


Diagram and Instructions



Operating Instructions

How to insert and replace the battery



Power On and Off

- Press and hold the power button / for 2 seconds to turn on the system. The LCD display will illuminate and retrieve the channel number used last time to indicate Power on successfully.
  - Press and hold the power button / for 2 seconds to turn the Power off.
- ⚠ Energy saving- Receiver will automatically power off if no signal is received after about 20min.

Process Synchronization

- step1:** Place the tour guide devices which need to be synchronized into the charger.
- step2:** Turn on the SYNC KIT and select the desired channel
- Press and hold the SYNC KIT power button for 2seconds to turn the power on. The LCD display will illuminate and retrieve to the previous synchronized channel number.
  - Press or button to select your desired synchronization channel
- step3:** Set the startup status of the tour guide system after the synchronization is completed. Do all systems power on (pre-boot mode) or remain off?
- Press and hold the and buttons simultaneously for 3 seconds, the channel number on LCD display switches between solid black and flashing.



Solid black : Off mode

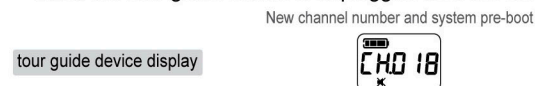
If " Off Mode " is selected in the sync kit, after the synchronization is complete, the new channel number will be displayed on the tour guide devices for 5 seconds and then turned off.



Flashing : Pre-boot mode / On mode

If " Pre-boot mode " is selected in the sync kit, after the synchronization is complete, the new channel number will be displayed and remained on the tour guide devices.

When the tour guide device is unplugged from the charger, it will automatically turn on.

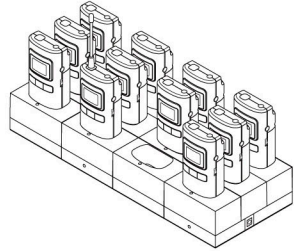


- step4:** Insert the SYNC KIT into any slot of the charger.
- step5:** The LEDs on the charger will fast flash 5 times(approx. 5 secs) when synchronization is taking place.
- ⚠ If the charging slot indicator is on but not flashing during synchronization, this means that the synchronization has failed. Please confirm the following reasons that may cause the failure. If it still cannot be resolved, please contact us.
- SYNC KIT or tour guide device is not fully inserted into the charging slot
  - The new desired channel number set on the SYNC KIT exceeds the channel range of the original tour guide device
- step6:** LEDs will turn to solid when synchronization is complete.
- Note : Now, the solid Green or Red LEDs on the charger indicate tour guide systems' battery charging status.

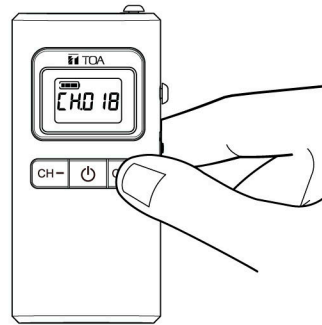
How to power off or charge WG-D100SK after synchronization

- WG-D100SK will be switched off in 5 minutes if none of the button is being pressed
- If the WG-D100SK is left over in the charger slot after the synchronization process, it will be switched off in 5 minutes and start charging.

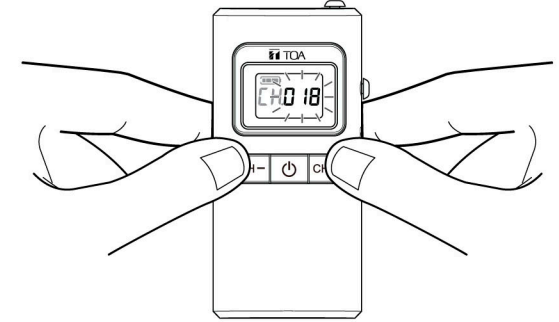
**Step 1:** Place the tour guide transmitters and receivers in the charger



**Step 2:** Adjust your desired channel on the WG-D100SK kit



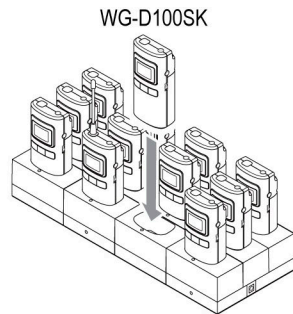
**Step 3:** Decide the status of tour guide system once synchronization is completed, will all systems power on (pre-boot) or remain power off ?



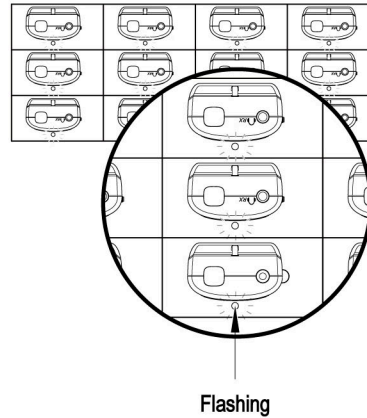
**Solid black :** Off mode

**Flashing :** Pre-boot mode

**Step 4:** Place WG-D100SK into any slot on the charger



**Step 5:** LEDs on the charger fast flash 5 times (approx. 5 seconds) indicates synchronization is taking place



**Step 6:** LEDs turn to solid and now indicate the battery charging status. The synchronization process is completed and you are ready to use your system.

